



MEMBERSHIP INFORMATION & APPLICATION KIT





BECOMING A MEMBER

CHOOSE A CATEGORY OF MEMBERSHIP.

- The club has a large choice of membership categories to suit your lifestyle, see the attached page for full descriptions and relative rates

COMPLETE THE APPLICATION FORM.

- Return the completed application via email manager@bairnsdalegolfclub.com.au or in person to the Golf Shop or Office. The office can assist with all application questions.

MAKE THE PAYMENT.

- When returning the application form, make sure payment is included or a direct debit form accompanies the application form.

HOW LONG DOES IT TAKE?

- **Start playing** as soon as Payment is made. We don't want to hold you up from playing so as soon as you make payment you can start playing.
- **Membership card**, online user info, Golf Australia handicap and general club information will be provided within 1 week of application.
- **Official acceptance** of membership occurs at Committee Meetings, this can take up to 4 weeks however it won't stop you from enjoying all the advantages of membership prior. The office will notify you if acceptance into the club is delayed or requires further information.
- The final step is attendance at an **Induction meeting** (compulsory for some) which is where we introduce you to the club, our members and the course.



GOLF AUSTRALIA
FACILITY OF THE YEAR
2015-16



GOLF VICTORIA
CLUB OF THE YEAR
2017



P.G.A
COUNTRY PRO-AM OF
THE YEAR 2015



P.G.A
GENERAL MANAGER
OF THE YEAR 2017

Discover why Bairnsdale Golf & Bowls Club is consistently recognised by its peers as the best, join today.



THE GOLF COURSE AND BOWLING RINKS



18 Hole, Par 71, 6033mtr championship layout.

● Slope 122 Scratch 72

● Slope 126 Scratch 72

Pure Bent Grass Greens.

Immaculate Santa Anna

Couch grass fairways.

Fescue surround program underway.

250 meter Practice Fairway.
Caged warm up nets,
Practice Pitching, Chipping,
Putting Greens & Practice
Bunker.



Spectacular views of
the Gippsland Lakes
and high country



Two superbly maintained
seven rink bowls greens with
comprehensive Tift Dwarf
Grass coverage. End shelters
and shade plus a modern
open pavilion with under
cover BBQ, kitchenette and
seating.



COMPETITION GOLF AND BOWLS

Golf and Bowls competitions come in many different forms from light hearted social competitions to serious club representation and championships. In any case competitions are a great way to improve your game and shouldn't pose any fear or second guessing of ones ability. For more information on club competitions contact the Manager, Golf Captain or Bowls President.

GOLF

Standard Comp Days:	Grades	Format	Time
Monday	No Comp		
Tuesday	Men & Women	Mostly Stableford	Mid morning, turn up and join up
Wednesday	Women	Varied	9:30am – 10:30am Two Tee
Thursday	Men	Varied	8:00am – 12:30pm
Friday	Men & Women	9 Holes Stableford	All day, just requires a partner
Saturday	Men & Women	Varied	8:00am – 12:30pm
Sunday	Mixed	Partners	11:00am – 12:30pm

PLUS

TEAM GOLF



BRINGING
TEAM SPIRIT
TO GOLF

REPRESENT THE CLUB AT PENNANT



FUN EVENTS INCLUDING NIGHT GOLF



BOWLS

Standard Comp Days:	Event
Monday	Triples
Tuesday	Seasonal Midweek Pennant
Thursday	Varied
Friday	Seasonal Twilight Bowls
Saturday	Seasonal Saturday Pennant
Sunday	Regular Special Events



GET THE FAMILY INVOLVED



SOCIAL EVENTS & VOLUNTEERING

SOCIAL EVENTS

If you enjoy having a great time and like the idea of joining a club with a great social culture then Bairnsdale Golf & Bowls Club is the only choice! Put simply, we run more social events for members than just about any other community club in the country! Some of our regular events include:

The Women's Annual Review



Trivia Nights



Twilight Cinema Nights



Annual Christmas Breakup/Dress up



VOLUNTEERING

There's plenty of ways to assist the club, below we have listed just a few. Most members aren't aware of the tremendous assistance volunteers provide to the employed staff, our club simply wouldn't survive without volunteers and we encourage all members to consider the below options, new or old!

Social Events.

Kitchen Catering.

Golf Course Maintenance

Garden Maintenance.

Junior Development.

Bar Service

and more.....

Committees:

- Social Committee
- Comp Day Committee
- Bowls Committee
- Management Committee
- Match Committee
- Junior Golf Committee

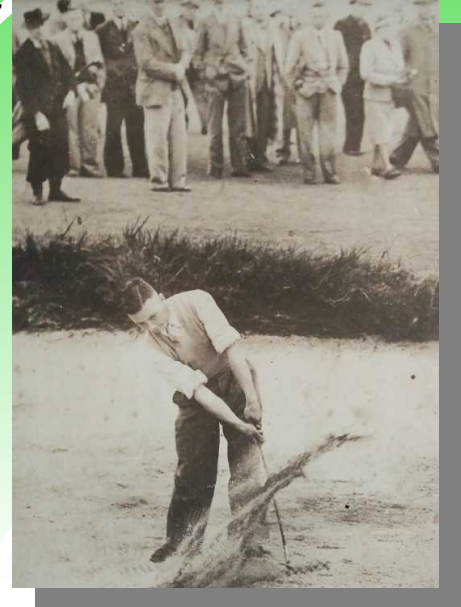




HISTORY AND BENEFITS

HISTORY

The Bairnsdale Golf Club was officially formed on the 24th September 1904 when 26 gentlemen attended a meeting at the Victoria Hotel cnr. Main & Bailey Streets Bairnsdale. The links was situated on the old racecourse in West Bairnsdale now the site of the Secondary College. Official play began in 1905, all greens were fenced to keep the stock, which were the fairway mowers, off them. 1924 saw the first Club House built, later to be incorporated into the present Club house. Increasing residential development forced the Club to relocate to the Eagle Point site and the present course was officially opened on 12 April 1958. 1991 saw the introduction of the couch fairway program involving many working bees with the last fairways completed in 2014 providing the excellent conditions we enjoy today.



Life Member Fred Morecroft (above)



Volunteers taking a break whilst building the current course at Eagle Point (left).

BENEFITS

Facilities

- Charming farmhouse style clubhouse with the following amenities:
 - Fully stocked Golf Shop operated by P.G.A member Wayne Thomas
 - Bar & Kitchen servicing members and visitors.
 - Lounge, Bar and Spike Bar sections of the clubhouse
 - Large open air deck overlooking the course and Gippsland Lakes.
 - Bowls Pavillion with undercover BBQ, Kitchenette and seating
- Great Communication, Monthly Bowls and Golf Newsletters as well as a dedicated Facebook Page
- Members discounts on bar purchases
- Sponsors discounts from supporting club sponsors.
- Comprehensive list of Reciprocal Clubs (discount or free green fees)

Barossa Valley
Bendigo
Clare
Darwin
Heidelberg
Lonsdale
Narooma
Patterson River
Rossdale
Goonawarra
Tura Beach
Yeppoon

Beaconhills
Bermagui
Claremont (TAS)
Devilbend
Howlong
Mallacoota
Neanger Park
Phillip Island
Sale
Terang
Waverley
Yowani

Berwick Montuna
Bright
Coober Pedy
Eden Gardens
Lakes Entrance
Mooroopna
Orbost
Rich River
Sandy Creek
Thurgoona
Woolgoolga

Belvoir Park
Castlemaine
Cranbourne
Gold Coast
Lang Lang
Murray Downs
Pambula Merimbula
Rosebud
Tathra
Tocumwal
Warragul



MEMBERSHIP CATEGORIES

Bairnsdale Golf Club Membership year runs from July 1st to June 30th each financial year. When an application is approved during the membership year a pro-rata rate will be charged. **EXAMPLE;** Join half way through the financial year and pay half the subscription rate.

	Length of term	When do you want to play?	How much will it cost?		
GOLF	12 months duration (July 1 st to June 30 th)	7 day's a week access Full membership: Entitling the member to seven day access to the golf course, all relevant competitions (<i>bookings required</i>), the clubhouse and its amenities. Includes a Golfink Handicap, Insurances Affiliations and voting rights	Annual Rate		Monthly Install
			Full	\$907	\$76.33
			75yrs & over	\$663	\$56.00
			30yrs to 39yrs	\$499	\$41.58
			19yrs to 29yrs	\$408	\$34.75
			15yrs to 18yrs	\$255	N/A
14yrs & under	\$ 62	N/A			
		Country*	\$328	\$28.08	
		*Country: Must primarily reside 100km from the Bairnsdale Post Office (radius). Proof of residence may be requested.			
		9 Holes: As per Full, however the member can only play 9 holes. If playing 18 holes the additional 9 hole green fee shall apply.	Full	\$536	\$45.41
			75yrs & over	\$424	\$36.08
		NEW Non Competition Access: Play 7 day's a week, however it must be outside of club competition times. This category does not include a Golfink Hcp.	One price only	\$445	\$37.08
		NEW 3 day's a week access: Play anytime Monday, Tuesday or Friday including competition time. Includes a Golfink Handicap, Affiliation, Insurances and voting rights. Guest green fee rates apply on other days.	One price only	\$495	\$41.25
	3 months duration NEW (From the date of application)	7 days a week LIMITED access: Includes 3 months 7 day's access and a Golfink Handicap. Conditions include: - Available once only. Can not be used sequentially to compose 6, 9 or 12 months membership. - Only available to new members who have not previously been members of the club. - Some restrictions on competition bookings may apply. <i>ie. Saturday comp bookings only available the day prior.</i>	One price only \$249		
BOWLS	12 months duration	7 day's a week access: Full access and privileges of the club facilities & bowling rinks but not the golf course. Includes, Affiliation, Insurances and voting rights.	Annual Rate		Monthly Install
			Full	\$150	N/A
			Junior	\$ 30	N/A
SOCIAL	12 months duration	7 day's a week access: Facility access only.	Annual Rate		
			For Golf & Bowls Membership		
			Full	\$1020	\$85.00
			75ys & over	\$776	\$64.66
			30yrs to 39yrs	\$612	\$51.00
		19yrs to 29yrs	\$521	\$43.40	
		9 Hole Golf Full	\$649	\$54.08	
		9 Hole Golf 75+	\$537	\$44.75	
			Annual Rate		
			One price only \$ 50		

MEMBERSHIP APPLICATION

BAIRNSDALE GOLF CLUB INC. 1090 PAYNESVILLE RD, EAGLE POINT, VIC, 3875
 ABN 58 801 938 139. PH: (03) 51566252, EMAIL manager@bairnsdalegolfclub.com.au

To the Secretary/Manager of the Bairnsdale Golf Club Inc. I desire to become a Member of the Bairnsdale Golf Club in the following category:

STEP 1	STEP 2	STEP 3	STEP 4 (TICK THE BOX)	Full Term Rate
Type Golf	Term 12 months (July 1 st to June 30 th)	Access 7 Days a week unlimited	Pay Rate Full Rate <input type="checkbox"/> 75yrs and over <input type="checkbox"/> 30yrs to 39yrs <input type="checkbox"/> 19yrs to 29yrs <input type="checkbox"/> 14yrs and under <input type="checkbox"/> 15yrs to 18yrs <input type="checkbox"/>	\$ \$ \$ \$ \$ \$
		7 Days, Country (100kms)	One Price Only <input type="checkbox"/>	\$
		7 Days, 9 Holes	Full Rate <input type="checkbox"/> 75yrs and over <input type="checkbox"/>	\$ \$
		3 Days a week (Mon/Tues/Fri)	Full Rate <input type="checkbox"/> 75yrs and over <input type="checkbox"/>	\$ \$
		7 Days Excluding Comp Time	One Price Only <input type="checkbox"/>	\$
	3 months (From date of application)	7 Days a week (with limitations)	One Price Only <input type="checkbox"/>	\$
Bowls (stand alone)	12 month (July 1 st to June 30 th)	7 Days a week unlimited	One Price Only <input type="checkbox"/>	\$
Bowls & Golf	Category: _____ <input type="checkbox"/>			\$
Social	12 months (July 1 st to June 30 th)		One Price Only <input type="checkbox"/>	\$

Full Name of Candidate (I hereby declare the following details are correct:-

MR MRS MISS M/S: Given Name.....SURNAME:.....
 POSTAL ADDRESS:.....P/CODE.....
 TELEPHONE:.....MOBILE:.....DATE OF BIRTH:...../...../.....
 EMAIL:.....OCCUPATION:.....
 EMERGENCY CONTACT NAME:.....EMERG PHONE:.....
 SIGNED:..... DATE OF APPLICATION:...../...../.....

I hereby agree, if accepted, to be bound by the Statement of Purpose and the Rules of the Club.

GOLF MEMBERSHIP

Have you been or are you a member of another club? **YES NO**
 If Yes, Name of the Club:.....How long ago?.....
 Golfink No:.....If a current member of another club,
 would you like to relocate your Golfink number to Bairnsdale? **YES NO**

BOWLS MEMBERSHIP

Have you been a member of other Bowls Clubs?
YES NO Name of Club:.....
 If Yes, do you need to provide a Clearance?.....
 If Yes, Please contact the Club.

PROPOSED BY:

SECONDED BY:

NAME:.....SIGNED:..... NAME:.....SIGNED:.....

PAYMENT

Credit Card **Cash** **Cheque:** Payable to Bairnsdale Golf Club

Name on Card
 Number: ___ / ___ / ___ / ___ Exp: ___ / ___ CCV: ___
 Signed:.....

**PAYMENT MUST
ACCOMPANY
THIS FORM**

Amount Paid:\$.....or
 D/Debit form attchd:
 Date Paid:...../...../.....
 Noticeboard:...../...../.....
 Reckon: MiClub
 Memb No: ___ - ___ - ___